

Isambard Kingdom Brunel



A task setting Powerpoint pack about Isambard Kingdom Brunel

Who is Isambard Kingdom Brunel?



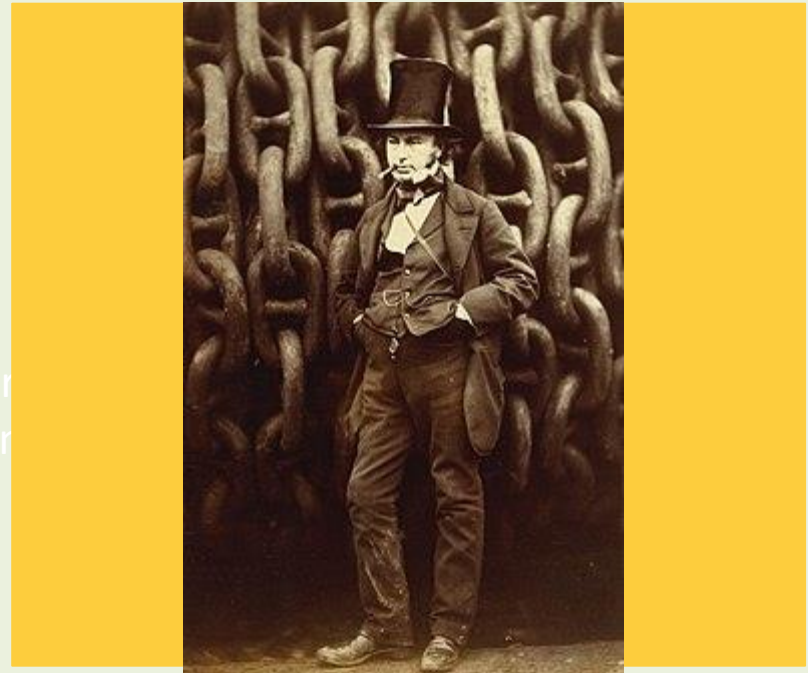
- Isambard Kingdom Brunel was a famous **engineer**.
- He is famous for building **bridges, ships and railways**.
- He was born in 1806 during the **British Industrial Revolution**.
- He died in 1859 aged only **53** due to too much hard work and worry.

What did Isambard Kingdom Brunel make?

- Isambard Kingdom Brunel made things such as ships, tunnels, and railways.

'In 1831 he built the Clifton Suspension
began building the Clifton Suspension Br
difficulties and contractual disagreement
death and the bridge was

- He created steamships that travelled faster than sailing ships and used coal as fuel.



- In 1833 he was the chief engineer for the new Great Western Railway, and many of the railway lines that he built are still used today.

Isambard Kingdom Brunel's First Job

- It was in 1822 when Isambard Kingdom Brunel took on his first job with his father.
- Their task was to dig a tunnel under the River Thames.
- Digging the tunnel was dangerous and it would sometimes collapse in on them.
- It was finally opened in 1843, after stopping work on it for 8 years.
- It is still used by trains today.



The Great Eastern

- Isambard Kingdom Brunel made the **world's biggest ship** called the **Great Eastern**.
- It was **211 meters long and 19,000 tons**.
- It was big enough to carry **4000 people** or 10,000 soldiers.
- It was designed to get people from Britain to Australia.



Photo courtesy of

twinkl - attribution

Bridges

Brunel is also famous for having designed and built some excellent bridges. Their designs were so good and they were so strong that they are still being used today.



The Clifton Suspension bridge in
Bristol



The Royal Albert Bridge across the river
Tamar

The Royal Albert Bridge

- Named after Queen Victoria's Husband, Prince Albert.
- The bridge took 5 years to build and was opened by [Prince Albert](#) on 2 May 1859. Brunel died later that year and his name was then placed above the portals at either end of the bridge as a memorial.
- Before the bridge, people could only cross the river by boat or passenger ferry.



Building The Royal Albert Bridge

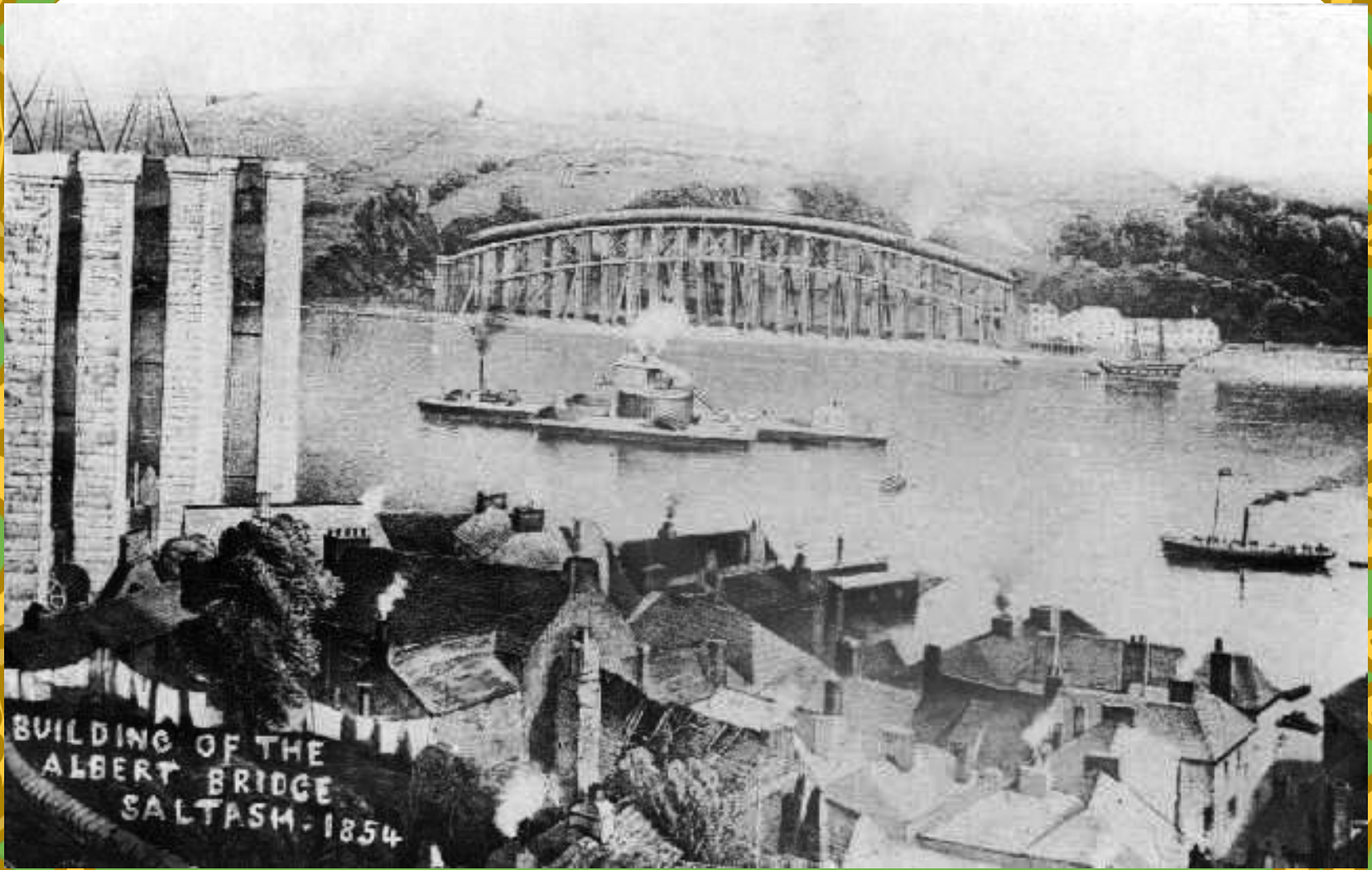


Photo courtesy of [nationalmaritimemuseum\(@flickr.com\)](https://www.nationalmaritimemuseum.org.uk/) - granted under creative commons licence - attribution

Building The Royal Albert Bridge



Photo courtesy of [nationalmaritimemuseum\(@flickr.com\)](https://www.flickr.com/photos/nationalmaritimemuseum/) - granted under creative commons licence - attribution

The Royal Albert Bridge

Notice that there is no bridge for cars across the river in this picture. Cars were only just being invented at this time.

You could only cross the river by boat or on the steam train. All trains were steam trains, powered by burning coal.

The car bridge that we use now was built many years later.



Photo courtesy of [nationalmaritimemuseum\(@flickr.com\)](https://www.flickr.com/photos/nationalmaritimemuseum/) - granted under creative commons licence - attribution

Brunel's statues in Saltash



Photo courtesy of [nationalmaritimemuseum\(@flickr.com\)](#) - granted under creative commons licence - attribution

Other famous creations by Brunel include Paddington Station in London



Photo courtesy of M&SLiteraryAdventures(@flickr.com) - granted under creative commons licence - attribution

If you could design a bridge to cross the river Tamar...

- what would it look like?
- What would it be made from?
- How would people cross it – by car, train, on foot?
- What would you call your bridge?



Photo

ion

Saltash – The Gateway to Cornwall 17/03/2016 15:57:33