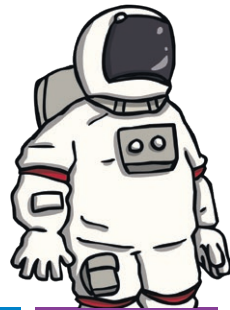
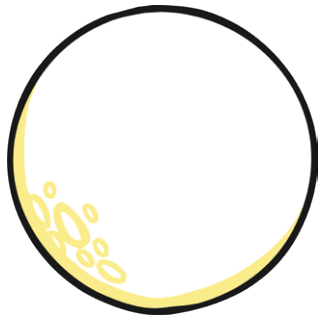


Adding and Subtracting 11 Space Race

How fast can you add or subtract 11?

Add 11 to the numbers in purple. Subtract 11 from the numbers in blue.
Write your answers as you go and see how long it takes you to finish the race!



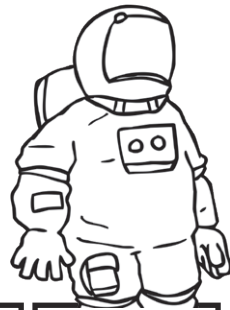
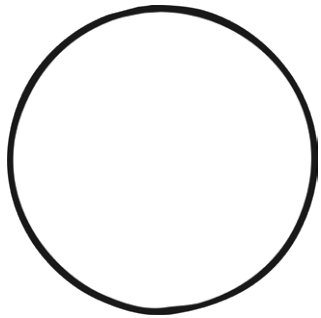
The race track consists of the following numbers and operations:

- Start: Rocket labeled "START"
- Track segments (from left to right):
 - Purple: 42
 - Blue: 33
 - Blue: 18
 - Purple: 41
 - Purple: 23
 - Blue: 14
 - Purple: 50
 - Blue: 38
 - Blue: 16
 - Blue: 24
 - Purple: 49
 - Blue: 17
 - Blue: 36
 - Purple: 28
 - Blue: 42
 - Purple: 19
 - Purple: 50
 - Blue: 45
 - Purple: 37
 - Purple: 29
 - Blue: 34
- Center buttons: +11 (purple), -11 (blue)
- End: Moon

Adding and Subtracting 11 Space Race **Answers** ☆

How fast can you add or subtract 11?

Add 11 to the numbers in purple. Subtract 11 from the numbers in blue.
Write your answers as you go and see how long it takes you to finish the race!



The race track consists of the following numbers in order from start to finish:

- 23 (purple)
- 34 (purple)
- 29 (purple)
- 40 (purple)
- 37 (purple)
- 45 (purple)
- 50 (purple)
- 19 (purple)
- 42 (purple)
- 31 (purple)
- 8 (blue)
- 28 (purple)
- 39 (purple)
- 25 (purple)
- 6 (blue)
- 60 (purple)
- 49 (purple)
- 13 (blue)
- 24 (blue)
- 27 (blue)
- 16 (blue)
- 53 (purple)
- 22 (purple)
- 7 (purple)
- 52 (purple)
- 34 (purple)
- 3 (purple)
- 61 (purple)
- 27 (purple)
- 38 (purple)
- 42 (purple)
- 33 (purple)
- 18 (purple)
- 41 (purple)
- 23 (purple)
- 14 (purple)
- 50 (purple)

Instructions on the track:

- Circle 1: +11
- Circle 2: -11