

Mental addition of decimals and whole numbers

Complete these additions.

$$6.5 + 2.9 = \square$$

$$6.5 + 2.9 = 6.5 + 3 - 0.1 = 9.4$$

Use
rounding!

1 $2.7 + 3.9 = \square$

4 $7.2 + 1.9 = \square$

2 $1.4 + 6.9 = \square$

5 $126 + 39 = \square$

3 $5.3 + 2.9 = \square$

6 $3.5 + 299 = \square$

Now try these.

$$7.3 + 12.4 = \square$$

$$7.3 + 12.4 = 12 + 7 + 0.4 + 0.3 = 19.7$$

Now try
partitioning!

7 $2.2 + 3.5 = \square$

9 $7.7 + 4.2 = \square$

8 $5.4 + 6.3 = \square$

10 $2.7 + 4.5 = \square$

Use rounding or partitioning to answer these additions.

11 $5.7 + 6.2 = \square$

14 $2.8 + 6.4 = \square$

12 $9.5 + 3.9 = \square$

15 $5.6 + 39 = \square$

13 $7.3 + 4.9 = \square$

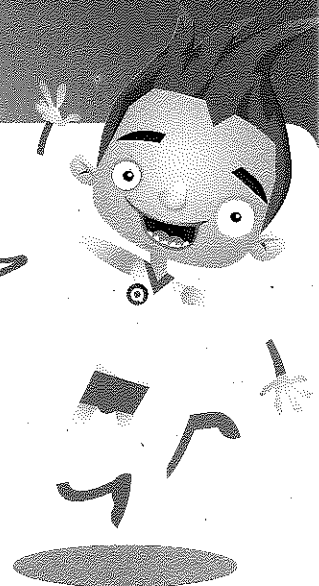
16 $8.2 + 8.3 = \square$



Write an addition that you can solve in your head using rounding.



I am confident with adding decimals and whole numbers using rounding and partitioning.



Complete these additions. Choose whether to use rounding or partitioning for each question.

1 $45.8 + 6.3 = \square$

9 $72 + 93 = \square$

2 $29.9 + 8.2 = \square$

10 $4.4 + 12.5 = \square$

3 $7.4 + 11.3 = \square$

11 $32.4 + 29.9 = \square$

4 $163 + 29 = \square$

12 $217 + 198 = \square$

5 $199 + 7.6 = \square$

13 $12.4 + 4.5 = \square$

6 $7.5 + 5.2 = \square$

14 $16.4 + 24.2 = \square$

7 $54 + 82 = \square$

15 $69.9 + 6.5 = \square$

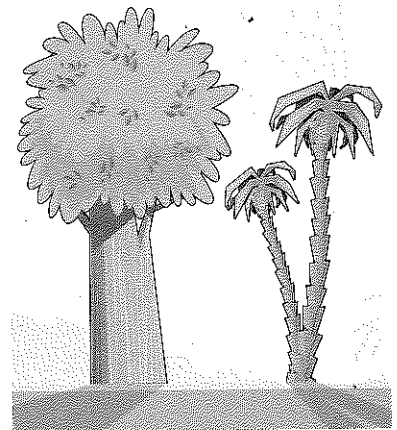
8 $39.9 + 5.6 = \square$

16 $25.4 + 7.4 = \square$

Solve these problems.

- 17 In a rainforest two trees stand side by side. One is 34.3 m tall and the other is 7.6 m taller. How tall is the taller tree?

- 18 A piece of string was cut into two pieces. One piece was 4.9 cm long and the other was 7.8 cm long. What was the length of the piece of string before it was cut?



Two decimals have a total of 13.6 .
What could the numbers be?